

CHAPTER 2

Introduction of the left hand

The first exercise to use both left and right hand together gradually introduces one finger at the time.

As a finger pattern throughout this exercise I have chosen:

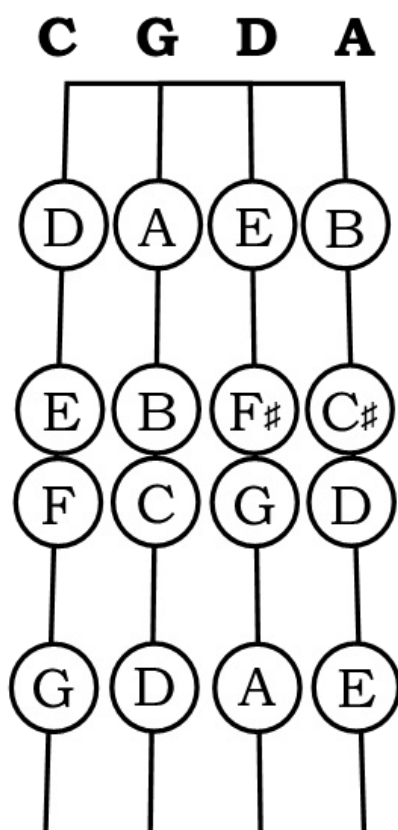
0 - Tone - 1 - Tone - 2 - Semi tone - 3 - Tone - 4.

This results in the second and third finger being placed against each other. All other fingers are separated. As a reminder I have added the / \ symbol to indicate where the semi tone is.

Important goals for this exercise are:

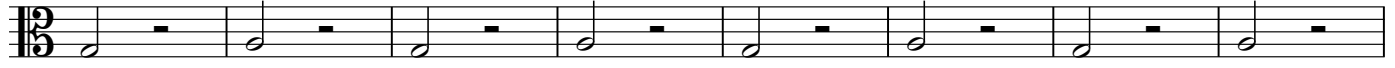
- Keep your fingers always round.
- Learn to play in tune by using either an electronic tuner or by playing along with the recording until your intonation matches that of the recording.
- When placing or removing a finger, move only the finger and not the hand nor wrist. Make sure your left wrist stays straight and your thumbs remain relaxed.
- It is important to keep as many fingers down as possible.
- Stay together with the metronome as the rhythm speeds up, and keep your bow straight at all times.

1st Finger Pattern



A 0 1 0 1 0

0 1 0 1 0



G A G A etc.
Sol La Sol La

Detailed description: This block shows the first system of a musical exercise. It consists of a single staff in bass clef with a 3/4 time signature. The notes are G, A, G, A, followed by a rest. Above the first five notes are the numbers 0, 1, 0, 1, 0. Below the notes are the labels G, A, G, A, etc., and the solfège syllables Sol, La, Sol, La.

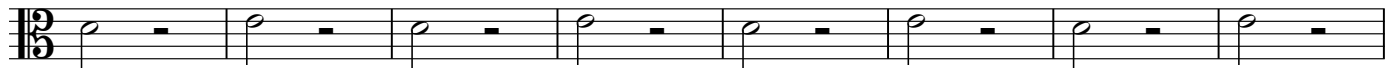


Detailed description: This block shows a musical staff with ten notes: G, A, G, A, G, A, G, A, G, A. The notes are written as quarter notes.



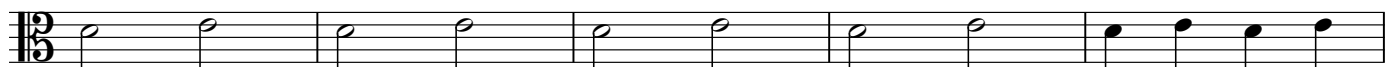
Detailed description: This block shows a musical staff with ten notes: G, A, G, A, G, A, G, A, G, A. The notes are written as eighth notes with beams connecting them in pairs.

0 1 0 1 0



D E D E etc.
Re Mi Re Mi

Detailed description: This block shows the second system of a musical exercise. It consists of a single staff in bass clef with a 3/4 time signature. The notes are D, E, D, E, followed by a rest. Above the first five notes are the numbers 0, 1, 0, 1, 0. Below the notes are the labels D, E, D, E, etc., and the solfège syllables Re, Mi, Re, Mi.

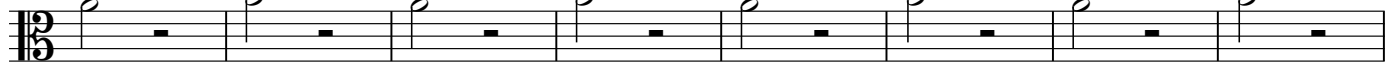


Detailed description: This block shows a musical staff with ten notes: D, E, D, E, D, E, D, E, D, E. The notes are written as quarter notes.



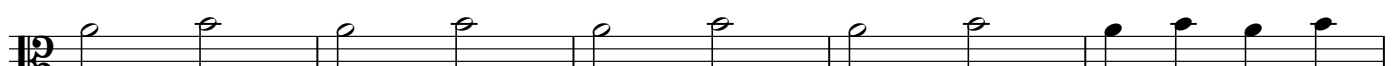
Detailed description: This block shows a musical staff with ten notes: D, E, D, E, D, E, D, E, D, E. The notes are written as eighth notes with beams connecting them in pairs.

0 1 0 1 0



A B A B etc.
La Si La Si

Detailed description: This block shows the third system of a musical exercise. It consists of a single staff in bass clef with a 3/4 time signature. The notes are A, B, A, B, followed by a rest. Above the first five notes are the numbers 0, 1, 0, 1, 0. Below the notes are the labels A, B, A, B, etc., and the solfège syllables La, Si, La, Si.



Detailed description: This block shows a musical staff with ten notes: A, B, A, B, A, B, A, B, A, B. The notes are written as quarter notes.



Detailed description: This block shows a musical staff with ten notes: A, B, A, B, A, B, A, B, A, B. The notes are written as eighth notes with beams connecting them in pairs.

B

0 1 2 1 2

C D E D E
Do Re Mi Re Mi

0 1 2 1 2

G A B A B
Sol La Si La Si

0 1 2 1 2

D E F# E F#
Re Mi Fa# Mi Fa#

0 1 #2 1 #2

A B C# B C#
La Si Do# Si Do#

C

0 1 2 3 2 3

C D E F E F
Do Re Mi Fa Mi Fa

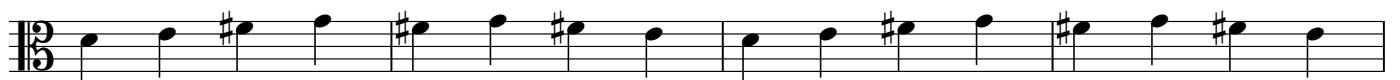
0 1 2 3 2 3

G A B C B C
Sol La Si Do Si Do



0 1 2 3 2 3

D E F# G F# G
Re Mi Fa# Sol Fa# Sol



0 1 2 3 2 3

A B C# D C# D
La Si Do# Re Do# Re



6

D₀

0 1 2 3 4 3 4 3

C Do D Re E Mi F Fa G Sol F Fa G Sol

Detailed description: This system shows the first staff of music in 2/4 time. It contains eight measures. The notes are C, D, E, F, G, F, G. Fingerings are indicated above the notes: 0 for C, 1 for D, 2 for E, 3 for F, 4 for G, 3 for F, and 4 for G. A slur connects the E and F notes. Below the staff, the solfège syllables 'Do', 'Re', 'Mi', 'Fa', 'Sol', 'Fa', 'Sol' are aligned with the notes.

Detailed description: This system shows the second staff of music. It contains eight measures. The notes are G, A, B, C, D, C, D. A slur connects the B and C notes. The notes are mostly quarter notes, with some eighth notes in the final measures.

Detailed description: This system shows the third staff of music. It contains eight measures of music, primarily consisting of quarter notes.

Detailed description: This system shows the fourth staff of music. It contains eight measures of music, primarily consisting of quarter notes.

Detailed description: This system shows the fifth staff of music. It contains eight measures of music, primarily consisting of quarter notes.

0 1 2 3 4 3 4

G Sol A La B Si C Do D Re C Do D Re

Detailed description: This system shows the sixth staff of music. It contains eight measures. The notes are G, A, B, C, D, C, D. Fingerings are indicated above the notes: 0 for G, 1 for A, 2 for B, 3 for C, 4 for D, 3 for C, and 4 for D. A slur connects the B and C notes. Below the staff, the solfège syllables 'Sol', 'La', 'Si', 'Do', 'Re', 'Do', 'Re' are aligned with the notes.

Detailed description: This system shows the seventh staff of music. It contains eight measures. The notes are G, A, B, C, D, C, D. A slur connects the B and C notes.

Detailed description: This system shows the eighth staff of music. It contains eight measures of music, primarily consisting of quarter notes.

Detailed description: This system shows the ninth staff of music. It contains eight measures of music, primarily consisting of quarter notes.

Detailed description: This system shows the tenth staff of music. It contains eight measures of music, primarily consisting of quarter notes.

0 1 2 3 4 3 4

D E F# G A G A
Re Mi Fa# Sol La Sol La

Detailed description: This block shows the first line of a musical score. It consists of a single staff with a treble clef and a 3/4 time signature. The notes are D, E, F#, G, A, G, A. Fingerings are indicated above the notes: 0 for D, 1 for E, 2 for F#, 3 for G, 4 for A, 3 for G, and 4 for A. A slur is placed over the F# and G notes.

Detailed description: This block shows the second line of the musical score. It consists of a single staff with a treble clef and a 3/4 time signature. The notes are D, E, F#, G, A, G, A. Fingerings are indicated above the notes: 0 for D, 1 for E, 2 for F#, 3 for G, 4 for A, 3 for G, and 4 for A. A slur is placed over the F# and G notes.

Detailed description: This block shows the third line of the musical score. It consists of a single staff with a treble clef and a 3/4 time signature. The notes are D, E, F#, G, A, G, A. There are no fingerings indicated.

Detailed description: This block shows the fourth line of the musical score. It consists of a single staff with a treble clef and a 3/4 time signature. The notes are D, E, F#, G, A, G, A. There are no fingerings indicated.

Detailed description: This block shows the fifth line of the musical score. It consists of a single staff with a treble clef and a 3/4 time signature. The notes are D, E, F#, G, A, G, A. There are no fingerings indicated.

0 1 2 3 4 3 4

A B C# D E D E
La Si Do# Re Mi Re Mi

Detailed description: This block shows the sixth line of a musical score. It consists of a single staff with a treble clef and a 3/4 time signature. The notes are A, B, C#, D, E, D, E. Fingerings are indicated above the notes: 0 for A, 1 for B, 2 for C#, 3 for D, 4 for E, 3 for D, and 4 for E. A slur is placed over the C# and D notes.

Detailed description: This block shows the seventh line of the musical score. It consists of a single staff with a treble clef and a 3/4 time signature. The notes are A, B, C#, D, E, D, E. Fingerings are indicated above the notes: 0 for A, 1 for B, 2 for C#, 3 for D, 4 for E, 3 for D, and 4 for E. A slur is placed over the C# and D notes.

Detailed description: This block shows the eighth line of the musical score. It consists of a single staff with a treble clef and a 3/4 time signature. The notes are A, B, C#, D, E, D, E. There are no fingerings indicated.

Detailed description: This block shows the ninth line of the musical score. It consists of a single staff with a treble clef and a 3/4 time signature. The notes are A, B, C#, D, E, D, E. There are no fingerings indicated.

Detailed description: This block shows the tenth line of the musical score. It consists of a single staff with a treble clef and a 3/4 time signature. The notes are A, B, C#, D, E, D, E. There are no fingerings indicated.

This exercise is ideal to practice the curving of the fingers of the left hand. Once you've placed a finger, keep it down as long as possible. With the right curve, the open strings will sound clear without lifting any fingers before the music requires. (6th bar of each line)

The exercise is written out using only one of the finger patterns you have already studied. Repeat it applying all the finger patterns from the previous exercise as well.

With a little bit of imagination you can combine this exercise with the bowing patterns of Ex. 5 in Chapter 1.

E 0 0 1 0 2 0

0 0 1 0 2 0

C Do 3 G Sol 0 D Re 4 G Sol 0 E Re 3 G Sol 0

F Fa 2 G Sol 0 G Sol 1 G Sol 0 F Fa 0 G Sol 0

E Mi 0 G Sol 0 D Re 1 G Sol 0 C Do 2 0

G Sol 3 D Re 0 A La 4 D Re 0 B Si 3 D Re 0

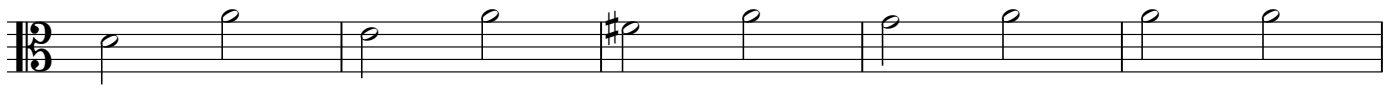
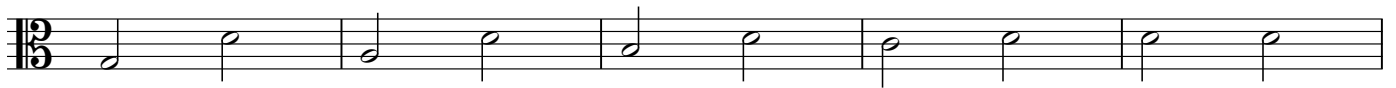
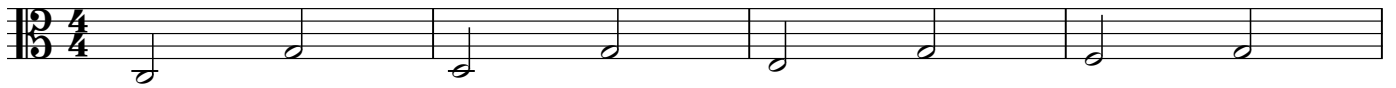
C Do 2 D Re 0 D Re 1 D Re 0 C Do 0 D Re 0

B Si 0 D Re 0 A La 1 D Re 0 G Sol 2 0

D Re 3 A La 0 E Mi 4 A La 0 F# Fa# 3 A La 0

G Sol 2 A La 0 A La 1 A La 0 G Sol 0 A La 0

F# Fa# A La E Mi A La D Re

F

The same exercise as before but now played as double stops. This technique is invaluable when you practice intonation. Make sure your instrument is tuned before!

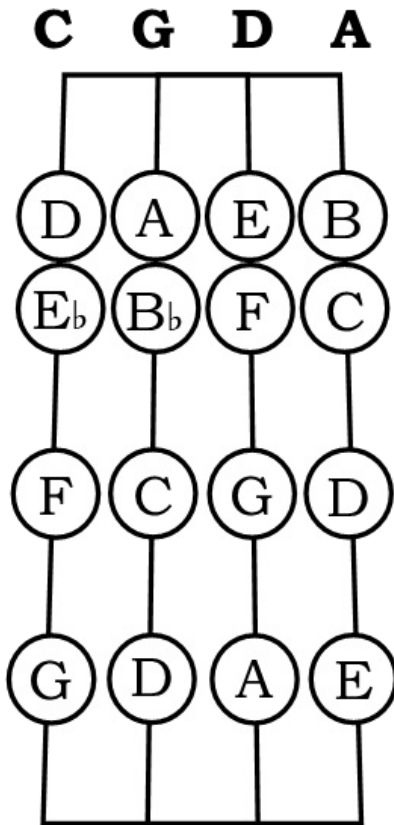
G

The following exercise is a variation on the previous exercise. There is no fixed finger pattern for the left hand. Semi tones will occur between all fingers, sometimes more than once. To train flexibility I have added the most common patterns, which will be used in the Major and Minor scales later on.

The Second finger pattern has the semi tone between the first and second finger:

0 - Tone - 1 - Semi tone - 2 - Tone - 3 - Tone - 4

2nd Finger Pattern



H 0 1 2 1 2

C Do D Re Eb Mib D Re Eb Mib

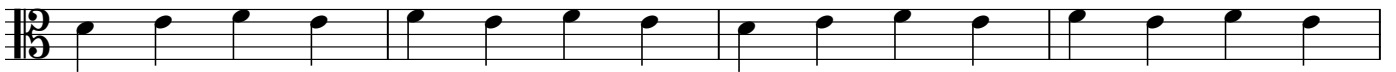
0 1 2 1 2

G Sol A La Bb Sib A La Bb Sib



0 1 2 1 2

G A Bb A Bb
Sol La Sib La Sib



0 1 2 1 2

A B C B C
La Si Do Si Do





0 1 2 3 2 3

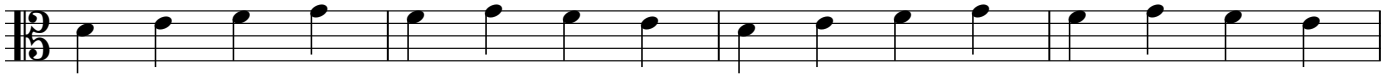
C Do D Re E \flat Mi \flat F Fa E Mi \flat F Fa

0 1 2 3 2 3

G Sol A La B \flat Si \flat C Do B \flat Si \flat C Do

0 1 2 3 2 3

D Re E Mi F Fa G Sol F Fa G Sol



A B C D C D
La Si Do Re Do Re





0 1 2 3 4 3 4

C Do D Re Eb Mib F Fa G Sol F Fa G Sol

0 1 2 3 4 3 4

G Sol A La Bb Sib C Do D Re C Do D Re

0 1 2 3 4 3 4

D E F G A G A
Re Mi Fa Sol La Sol La

Detailed description: This system shows the first seven notes of a scale. The notes are D, E, F, G, A, G, and A. Fingerings are indicated above the notes: 0 for D, 1 for E, 2 for F, 3 for G, 4 for A, 3 for G, and 4 for A. A slur is placed over the E, F, and G notes. The notes are written as half notes on a single staff.

Detailed description: This system continues the scale with notes G, A, B, C, D, E, and F. The notes are written as half notes on a single staff.

Detailed description: This system continues the scale with notes G, A, B, C, D, E, and F. The notes are written as half notes on a single staff.

Detailed description: This system continues the scale with notes G, A, B, C, D, E, and F. The notes are written as half notes on a single staff.

Detailed description: This system continues the scale with notes G, A, B, C, D, E, and F. The notes are written as half notes on a single staff.

0 1 2 3 4 3 4

A B C D E D E
La Si Do Re Mi Re Mi

Detailed description: This system shows the first seven notes of a second scale. The notes are A, B, C, D, E, D, and E. Fingerings are indicated above the notes: 0 for A, 1 for B, 2 for C, 3 for D, 4 for E, 3 for D, and 4 for E. A slur is placed over the B, C, and D notes. The notes are written as half notes on a single staff.

Detailed description: This system continues the scale with notes A, B, C, D, E, D, and E. The notes are written as half notes on a single staff.

Detailed description: This system continues the scale with notes A, B, C, D, E, D, and E. The notes are written as half notes on a single staff.

Detailed description: This system continues the scale with notes A, B, C, D, E, D, and E. The notes are written as half notes on a single staff.

Detailed description: This system continues the scale with notes A, B, C, D, E, D, and E. The notes are written as half notes on a single staff.



0 0 1 0 2 0

C G D G Eb G
Do Sol Re Sol Mib Sol

3 0 4 0 3 0

F G G G F G
Fa So Sol Sol Fa Sol

2 0 1 0 0

Eb G D G C
Mib Sol Re Sol Do

0 0 1 0 2 0

G D A D Bb D
Sol Re La Re Sib Re

3 0 4 0 3 0

C D D D C D
Do Re Re Re Do Re

2 0 1 0 0

Bb D A D G
Sib Re La Re Sol

0 0 1 0 2 0

D A E A F A
Re La Mi La Fa La

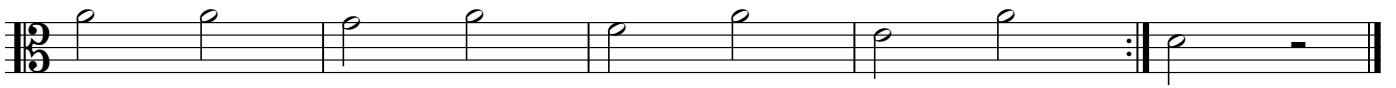
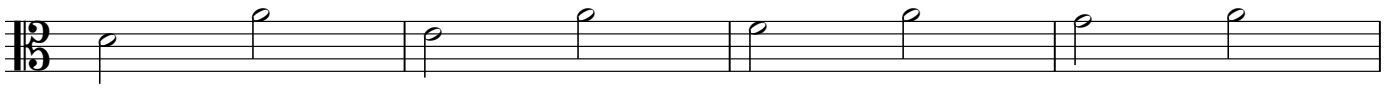
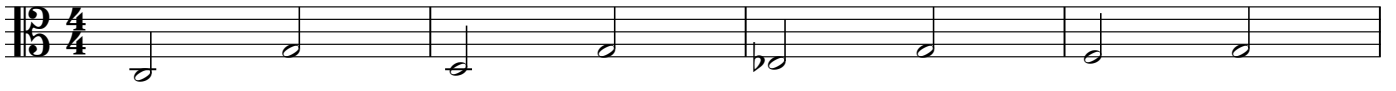
3 0 4 0 3 0

G A A A G A
Sol La La La Sol La

2 0 1 0 0

F A E A D
Fa La Mi La Re

L



M

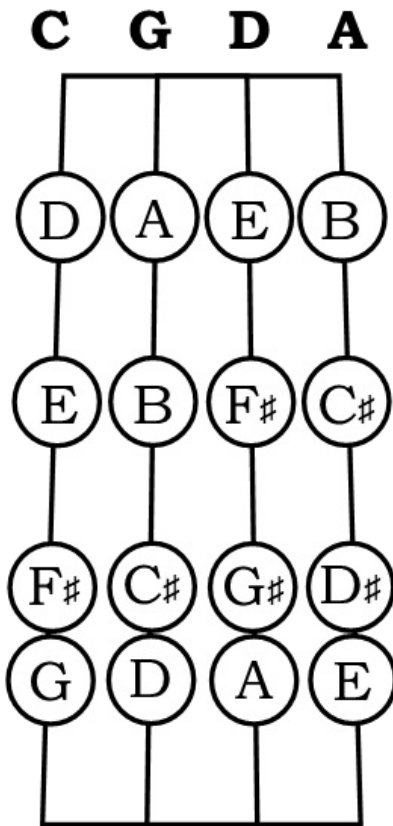


The Third finger pattern has the semi tone between the third and fourth finger:

0 - Tone - 1 - Tone - 2 - Tone- 3 - Semi tone - 4

The finger pattern 0, 1 and 0 , 1, 2 are identical to exercises 1 and 2. There is no need to repeat those, so we start straight away with the exercises that differ from the previous ones.

3rd Finger Pattern



N 0 1 2 3 2

C D E F# E
Do Re Mi Fa# Mi

3

F# G A B C# B A G F#
Fa#

0 1 2 3 2 3

G A B C# B C#
Sol La Si Do# Si Do



0 1 2 3 2 3


D Re E Mi F# Fa# G# Sol# F# Fa# G# Sol#



0 1 2 3 2 3

A La B Si C# Do# D# Re# C# Do# D# Re#



20  0

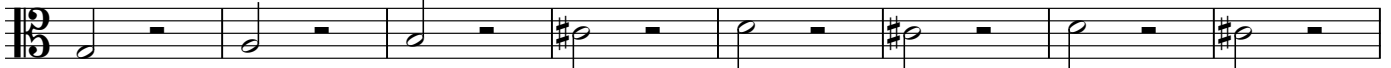
0 1 2 3 4 3 4



C D E F# G F# G
Do Re Mi Fa# Sol Fa# Sol



0 1 2 3 4 3 4



G A B C# D C# D
Sol La Si Do# Re Do# Re



0 1 2 3 4 3 4

D E F# G# A G# A
Re Mi Fa# Sol# La Sol# La

0 1 2 3 4 3 4

A B C# D# E D# E
La Si Do# Re# Mi Re# Mi



0 0 1 0 2 0

C G D G E G
Do Sol Re Sol Mi Sol

3 0 4 0 3 0

F# G G G F# G
Fa# So Sol Sol Fa# Sol

2 0 1 0 0

E G D G C
Mi Sol Re Sol Do

0 0 1 0 2 0 3 0

G D A D B D C# D
Sol Re La Re Si Re Do# Re

4 0 3 0 2

D D C# D B
Re Re Do# Re Si

0 1 0 0

D A D G
Re La Re Sol

0 0 1 0 2 0 3 0

D A E A F# A G# A
Re La Mi La Fa# La Sol# La

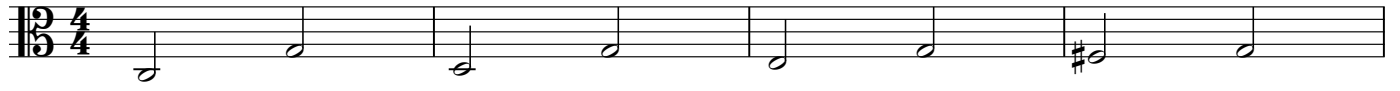
4 0 3 0 2

A A G# A F#
La La Sol# La Fa#

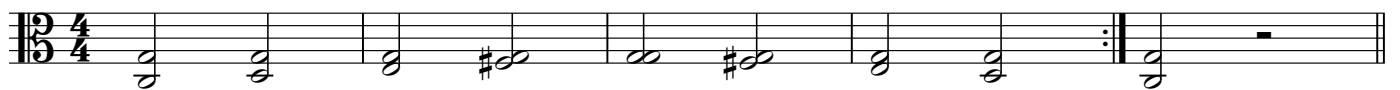
0 1 0 0

A E A D
La Mi La Re

Q



R



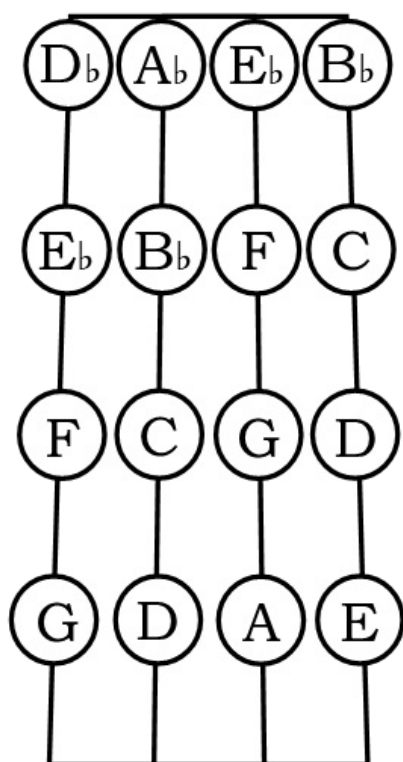
The next finger pattern has no semi-tones between the fingers. The semi-tone is located between the open string and the first finger. Pull the first finger back, rather than moving the entire hand a semi-tone further back. This will make it much easier to spread the hand.

0 - Semi tone - 1 - Tone - 2 - Tone - 3 - Tone - 4

4th Finger

Pattern (A)

C G D A



S
0 1 0 1

C Do Db Reb C Do Db Re

0 1 0 1

G Sol Ab Lab G Sol Ab Lab

0 1 0 1

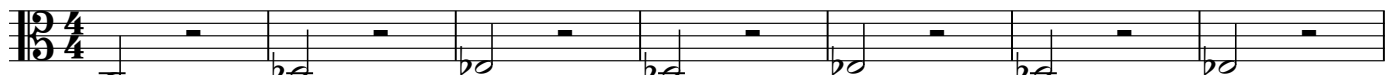
D Re Eb Mib D Re Eb Mib



A Bb A Bb
La Sib La Sib



0 1 2 1 2



C Db Eb Db Eb
Do Reb Mib Reb Mib



0 1 2 1 2



G Ab Bb Ab Bb
Sol Lab Sib Lab Sib



D Eb F Eb F
Re Mib Fa Mib Fa



A Bb C Bb C
La Sib Do Sib Do







0 1 2 3 2 3

C Db Eb F Eb F
Do Reb Mib Fa Mib Fa

0 1 2 3 2 3

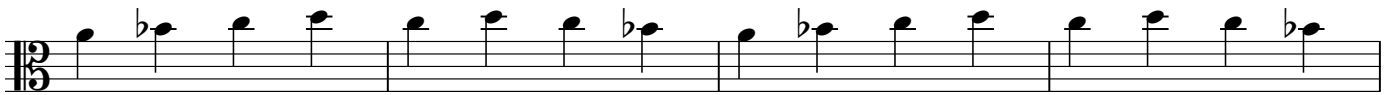
G Ab Bb C Bb C
Sol Lab Sib Do Sib Do

0 1 2 3 2 3

D Eb F G F G
Re Mib Fa Sol Fa Sol



A Bb C D C D
La Sib Do Re Do Re



V

0 1 2 3 4 3 4



C Db Eb F G F G
Do Reb Mib Fa Sol Fa Sol



0 1 2 3 4 3 4

G Sol Ab Lab Bb Sib C Do D Re C Do D Re

Detailed description: This system shows the first seven notes of a scale. The notes are G, Ab, Bb, C, D, C, and D. Fingerings are indicated above the notes: 0 for G, 1 for Ab, 2 for Bb, 3 for C, 4 for D, 3 for C, and 4 for D. A brace connects the G and Ab notes. The notes are written on a single staff with a treble clef and a key signature of one flat.

Detailed description: This system contains the eighth and ninth notes of the scale: Eb and F. The notes are written on a single staff with a treble clef and a key signature of one flat.

Detailed description: This system contains the tenth and eleventh notes of the scale: F and G. The notes are written on a single staff with a treble clef and a key signature of one flat.

Detailed description: This system contains the twelfth and thirteenth notes of the scale: Ab and Bb. The notes are written on a single staff with a treble clef and a key signature of one flat.

Detailed description: This system contains the fourteenth and fifteenth notes of the scale: C and D. The notes are written on a single staff with a treble clef and a key signature of one flat.

0 1 2 3 4 3 4

D Re Eb Mib F Fa G Sol A La G Sol A La

Detailed description: This system shows the first seven notes of a second scale. The notes are D, Eb, F, G, A, G, and A. Fingerings are indicated above the notes: 0 for D, 1 for Eb, 2 for F, 3 for G, 4 for A, 3 for G, and 4 for A. A brace connects the D and Eb notes. The notes are written on a single staff with a treble clef and a key signature of two flats.

Detailed description: This system contains the eighth and ninth notes of the second scale: A and Bb. The notes are written on a single staff with a treble clef and a key signature of two flats.

Detailed description: This system contains the tenth and eleventh notes of the second scale: Bb and C. The notes are written on a single staff with a treble clef and a key signature of two flats.

Detailed description: This system contains the twelfth and thirteenth notes of the second scale: C and D. The notes are written on a single staff with a treble clef and a key signature of two flats.

Detailed description: This system contains the fourteenth and fifteenth notes of the second scale: D and Eb. The notes are written on a single staff with a treble clef and a key signature of two flats.

0 1 2 3 4 3 4

A Bb C D E D E
 La Sib Do Re Mi Re Mi

W

0 0 1 0 2 0 3

C G Db G Eb G F
 Do Sol Reb Sol Mib Sol Fa

G G G F G
 Sol Sol Sol Fa Sol

Eb G Db G C
 Mib Sol Reb Sol Do

G D Ab D Bb D C D
 Sol Re La Re Si Re Do Re

D D C D Bb
 Re Re Do Re Sib

D Ab D G
 Re Lab Re Sol

32

0 0 1 0 2 0 3 0

D A Eb A F A G A
Re La Mib La Fa La Sol La

4 0 3 0 2

A A G A F
La La Sol La Fa

A Eb A D
La Mib La Re

X

Y

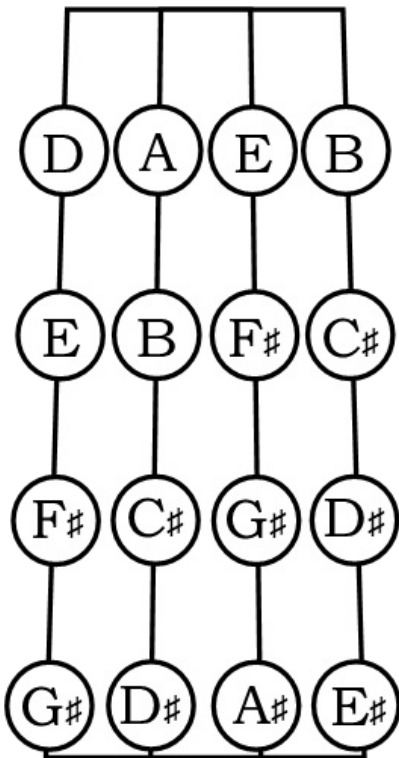
This next finger pattern has no semi-tones at all. Every interval is a tone. To make it easier for the fourth finger to reach, place the thumb approx. opposite your second finger and pull back the first finger.

0 - Tone - 1 - Tone - 2 - Tone - 3 - Tone - 4

4th Finger

Pattern (B)

C G D A



Z
0 1 2 3 4

C D E F# G#
Do Re Mi Fa# Sol#

3 4

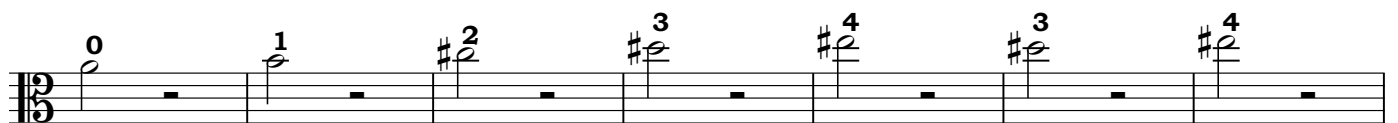
F# G#
Fa# Sol#

0 1 2 3 4 3 4

G A B C# D# C# D#
Sol La Si Do# Re# Do# Re#



0 1 2 3 4 3 4
 D E F# G# A# G# A#
 Re Mi Fa# Sol# La# Sol# La#



0 1 2 3 4 3 4
 A B C# D# E# D# E#
 La Si Do# Re# Mi# Re# Mi#



